

**mott**  
MANUFACTURING

ISO 9001:2000 REGISTERED

### Life Long Quality Assured....

Mott's laboratory furniture is designed and manufactured to provide a durable and aesthetically pleasing solution to the increasing operating, productivity, and safety demands of the modern laboratory.

Laboratory technology changes faster now than ever before. To meet this challenge, Mott's laboratory furniture has been designed to deliver high adaptability levels for both today's and tomorrow's requirements.

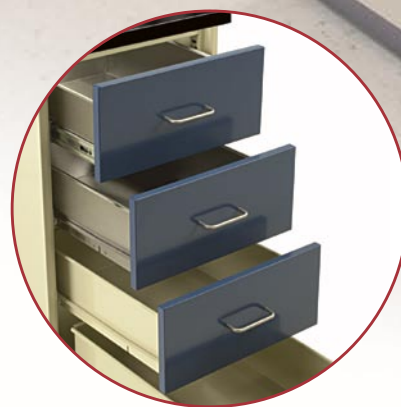
Available in numerous configurations with countless options, Mott's quality laboratory furniture can be readily custom designed and manufactured to meet each laboratory's unique requirements.

All furniture components have been tested to the SEFA 8 Recommended Practices to ensure many years of intensive use in a demanding environment.

Our commitment to quality through our ISO Quality Management System assures the reliable, long life of our laboratory furniture.



• **Drawer Suspension**—Drawers have integral safety stops to prevent accidental withdrawal. Drawers are self closing for the last 6" for effortless use and reliable safety.



• **Drawers** — Drawer bodies are one piece, full access and reinforced. Drawer fronts include sound deadening material. Drawers are available in painted cold rolled steel or stainless steel with either self-closing or full extension suspension.



• **Architectural Overlay Design** — The full range of Sigma Systems™ cabinetry from base cabinets to tall floor mounted cabinets is available in our Architectural Overlay Design.



• **Wood Veneer Fronts** — Quality wood veneer fronts can readily be provided for doors and drawers.



• **Adjustable Shelves** — Shelves are conveniently adjustable on 1/2" increments for maximum flexibility.



• **Acid Cabinet** — Supplied with a one piece molded polyethylene liner for maximum durability and long life.



• **Solvent Cabinet** — UL Listed to U.S. and Canadian safety standard UL 1275. This cabinet is insulated and supplied with a 3 point lockable latch. Sequential self closing latch is an available option.



• **Floor and Wall Cabinets** — Storage options include open fronts and hinged or sliding doors in framed/unframed glass or solid panels.

• **Coating Finish and Color** - A thermosetting laboratory grade powder coating delivers exceptional chemical and scratch resistance, excellent hardness and adhesion, and a quality luster. An extensive rainbow of colors is available including multiple color schemes. All colors are quality controlled with micro-processor technology to ensure consistent color.

• **Full Height Removable Back Panels** — Standard door base cabinet backs are easily removable without the use of tools. This provides convenient access to services and effective vermin control.

• **Handles and Hinges** — Numerous designs that meet specific aesthetic and functional requirements are readily available.

• **Quality Doors** — Sound deadening material and durable five knuckle hinges are standard features on all doors. The result is rigid construction that remains square and provides quiet operation.

• **Integral Toe Kick** — A fully enclosed 4" high by 3" deep toe space delivers reliable laboratory safety. A detachable sub-base is an available option.

• **Sigma Barrier™** — This optional coating provides excellent moisture and corrosion resistance in applications that involve high levels of wetness and humidity. The full range of powder coated Sigma Systems™ products are available with the Sigma Barrier™ coating.

QUALITY IN PRODUCT • PRECISION IN PROCESS • STRENGTH IN PEOPLE



- **Cabinet Construction** – Each cabinet is fabricated with quality workmanship using furniture grade cold rolled steel. All components are die formed, notched, welded and tightly fitted to provide maximum strength and rigidity.
- **Cabinet Bases** – Removable inner bottom and supplementary floor pan can be provided for convenient cleaning.
- **Field Adjustable Design** – Standard base cabinet doors and drawers are interchangeable in field without the use of special tools. This delivers unique future adaptability for changing laboratory needs.
- **Sink Cabinets** – Supplied with galvanized toe kick base and lower base shelf to prevent rust developing from commonly wet operating conditions.
- **Stainless Steel Components** – High quality 304 or 316 stainless steel counter tops, sinks, and cabinets can be designed and manufactured to meet specific laboratory requirements.



STEEL LABORATORY FURNITURE

## STEEL LABORATORY FURNITURE



QUALITY BY DESIGN

Mott Manufacturing has been successfully designing and manufacturing its extensive line of quality steel laboratory furniture and fume hoods since the early 1960's. With furniture installed world wide in numerous health care, research, industrial, pharmaceutical, and educational applications, Mott can provide upon request an extensive summary of its many installations.

### Customer Satisfaction is Mott's First Priority

Delivering industry-leading customer service is more than just words to the Mott Team. We know that satisfied customers drive our success. We therefore provide our customers with the following key values:

#### Consistent Product Quality

Our ISO 9001 Registered Quality Management System, supported by quality materials and skilled employees, ensures only high quality product is shipped.

#### Just-in-Time Delivery Capability

Our four to six weeks manufacturing lead time, along with our high on-time and complete shipment performance, provide exceptional reliability to our customers.

#### Adaptable Product Line

Our extensive Sigma Systems™ modular product line permits our customers to readily configure the most productive solution to meet their specific requirements. Our flexible manufacturing capabilities allow convenient modification of standard components to fit the unique requirements of each laboratory.

#### Competitive Value

Our several decades of application experience allows us to provide productive furniture solutions to our customers. This experience, along with our high product quality, custom manufacturing capability, consistently strong service levels, and competitive pricing provide high value to our customers.

#### Extensive Dealer Network

Our dealers are the best. We build strong relationships with our dealers to provide industry-leading service levels. Our dealers' on site leadership and years of experience combined with our design and manufacturing skills deliver the very best in laboratory furniture solutions.



#### Mott Manufacturing Limited

452 Hardy Road  
Brantford, ON, Canada  
N3T 5L8

Tel: 519-752-7825  
Fax: 519-752-2895  
Web: www.mott.ca



Sigma Systems™ is a registered trademark of Mott Manufacturing Limited.  
D.O. - MAY 2008

